

## Grid Module System

- Dimmer Modules - Flush or Surface
- 10 amp Grid Switch Modules
- 20 amp Grid Switch Modules
- Neon Grid Switch Modules
- General Grid Switch Module Accessories
- White E-Flush Cover Plates
- Surface Metal Clad Cover Plates
- Decorative Satin Chrome Cover Plates
- Mounting Grid Frames
- Steel Boxes - Surface or Flush Mounting



## Introduction



The Selectric grid module system of interchangeable switch, dimmer and fused connection unit modules offers exceptional style and features, focusing mainly on versatility for a wide range of domestic, industrial and commercial environments.

Manufactured under ISO to the latest British and European standards and backed with our 15 year guarantee, our grid module system range offers style, durability and quality!

| Contents                                | Page |
|---|------|
| Dimmer Modules Push On/Off              | 50   |
| 10 amp Grid Switch Modules              | 50   |
| 20 amp Grid Switch Modules              | 51   |
| Neon Grid Switch Modules                | 51   |
| General Grid Switch Module              |      |
| Accessories                             | 52   |
| White UREA Flush Cover Plates           | 52   |
| Surface Metal Clad Cover Plates         | 53   |
| Decorative Satin Chrome Cover Plates    | 53   |
| Mounting Grid Frames                    | 54   |
| Steel Boxes - Surface or Flush Mounting | 54   |

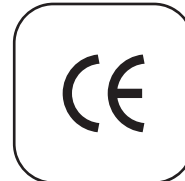


## Features & Benefits

- Compliant with the latest British and European standards



- CE approved and marked where applicable



- The versatility to choose and change modules with various plate finishes



- Each piece 100% appearance and function tested before being released



- Easy to install with a clean and modern design



- 15 Year guarantee



## Technical Information

### Specifications & Features

Dimensions  
 SMB1-2 79x79x42mm  
 SMB3-4 73x134x42mm  
 SMB6-8 134x134x42mm  
 SMB12 134x195x42mm

### Dimmer Modules Push On/Off

- Compliant with BSEN60669-2-1 various
- CE Marked
- Dimmer grid modules suitable for 45mm deep boxes
- For use with incandescent lamps only, not suitable on Low Voltage (LV) circuits

### 10 Amp Grid Switch Modules

- Compliant with BSEN60669-1
- CE Marked
- X-rated for fluorescent or inductive loads
- Standard grid switch modules suitable for 25mm deep boxes

### 20 Amp Grid Switch Modules

- Compliant with BSEN60669-1
- CE Marked
- X-rated (where applicable) for fluorescent or inductive loads
- Standard grid switch modules suitable for 25mm deep boxes

### Neon Grid Switch Modules

- Standard grid switch modules suitable for 25mm deep boxes

### General Grid Switch Module Accessories

- Compliant with BS1363 & BS5733 (where applicable)
- CE Marked (where applicable)
- Standard grid modules suitable for 25mm deep boxes

### White UREA Flush Cover Plates

- Compliant with BS5733

### Surface Metal Clad Cover Plates

- Compliant with BS5733

### Decorative Satin Chrome Cover Plates

- Compliant with BS5733

### Mounting Grid Frames

- Comes complete with fixing screws

### Steel Boxes-Surface or Flush Mounting

- Compliant with BS5733
- Suitable for surface and/or flush mounting



| Code No.    | Description           |
|-------------|-----------------------|
| SM201-2/400 | 2 way 400 watt, white |

## Dimmer Modules Push On/Off



**SM201-2/400**  
2 way 400 watt, white

**Features:**

- Compliant with BSEN60669-2-1 various
- CE Marked
- Dimmer grid modules suitable for 45mm deep boxes
- For use with incandescent lamps only, not suitable on Low Voltage (LV) circuits



SM201-2



| Code No. | Description                |
|----------|----------------------------|
| SM201    | 1 way, white               |
| SM201-2  | 2 way, white               |
| SM205    | Push switch "Press", white |
| SM206    | intermediate, white        |

## 10 Amp Grid Switch Modules



**SM205**  
Push Switch "Press", White

**Features:**

- Compliant with BSEN60669-1
- CE Marked
- X-rated for fluorescent or inductive loads
- Standard grid switch modules suitable for 25mm deep boxes

**20 Amp Grid Switch Modules**



**SM220N**  
1 way DP switch with neon, White

**Features:**

- Compliant with BSEN60669-1
- CE Marked
- X-rated (where applicable) for fluorescent or inductive loads
- Standard grid switch modules suitable for 25mm deep boxes

**Neon Grid Switch Modules**



**SMRN**  
200-250V red neon, white

**Features:**

- Standard grid switch modules suitable for 25mm deep boxes

SM220-1SK



SM220-1



**KEY**

| Code No.  | Description                            |
|-----------|--|
| SM220-1   | 1 way SP, white                        |
| SM220-2   | 2 way SP, white                        |
| SM220DP   | 1 way DP, white                        |
| SM220-1SK | 1 way DP key switch, white             |
| SM220-2SK | 2 way SP key switch, white             |
| SM220N    | 1 way DP with neon, white              |
| SM220-IS  | intermediate, white                    |
| SM220-CO  | 2 way and centre off, white            |
| SM220-COR | 2 way and centre off retractive, white |
| KEY       | Spare key for 20 amp key switch        |

SMGN



SMON

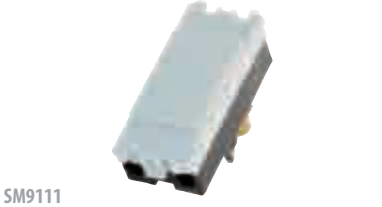


| Code No. | Description                 |
|----------|-----------------------------|
| SMRN     | 200-250V red neon, white    |
| SMGN     | 200-250V green neon, white  |
| SMON     | 200-250V orange neon, white |

## General Grid Module Accessories



SM961



SM9111



| Code No. | Description                                      |
|----------|--|
| SM9228   | 13 amp fused connection unit, white              |
| SM961    | 20 amp flex outlet, white                        |
| SM9111   | 1 gang blank plate, white<br>+ 2 earth terminals |



**SM9228**  
13 amp fused connection unit, white

- Features:**
- Compliant with BS1363 & BS5733 (where applicable)
  - CE Marked (where applicable)
  - Standard grid modules suitable for 25mm deep boxes

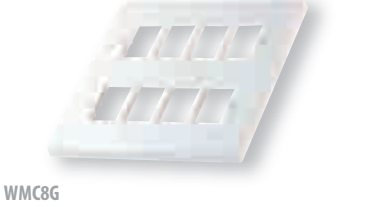
## White UREA Flush Cover Plates



WMC4G



WMC6G



WMC8G



**WMC12G**  
12 module moulded

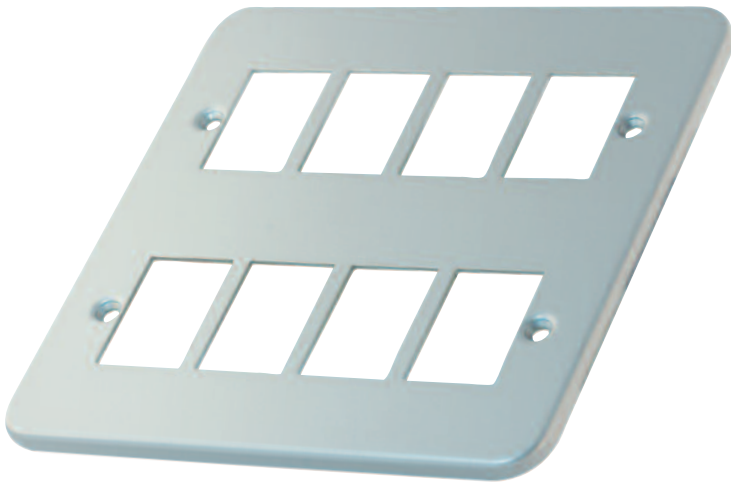
- Features:**
- Compliant with BS5733



| Code No. | Description       |
|----------|-------------------|
| WMC1G    | 1 module moulded  |
| WMC2G    | 2 module moulded  |
| WMC3G    | 3 module moulded  |
| WMC4G    | 4 module moulded  |
| WMC6G    | 6 module moulded  |
| WMC8G    | 8 module moulded  |
| WMC12G   | 12 module moulded |



**Surface Metal Clad Cover Plates**



**MCC8G**  
6 module

**Features:**  
• Compliant with BS5733

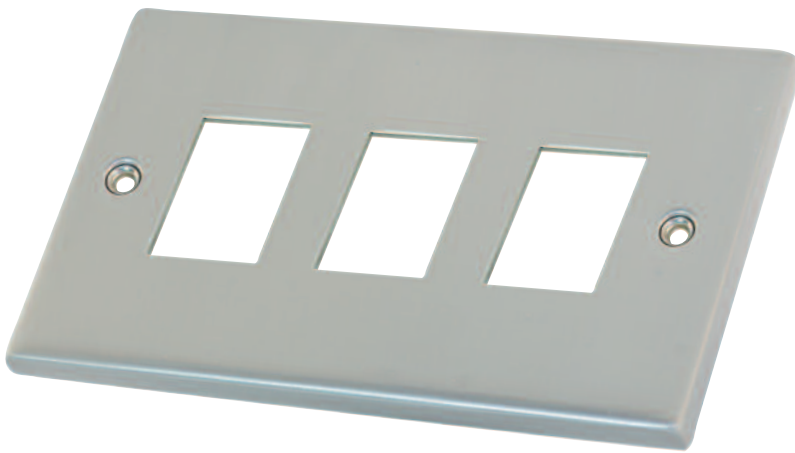
MCC1G

MCC4G

vMCC12G

| Code No. | Description |
|----------|-------------|
| MCC1G    | 1 module    |
| MCC2G    | 2 module    |
| MCC3G    | 3 module    |
| MCC4G    | 4 module    |
| MCC6G    | 6 module    |
| MCC8G    | 8 module    |
| MCC12G   | 12 module   |

**Decorative Satin Chrome Cover Plates**



**SCC3G**  
3 module

**Features:**  
• Compliant with BS5733

SCC1G

SCC4G

SCC6G

| Code No. | Description |
|----------|-------------|
| SCC1G    | 1 module    |
| SCC2G    | 2 module    |
| SCC3G    | 3 module    |
| SCC4G    | 4 module    |
| SCC6G    | 6 module    |
| SCC8G    | 8 module    |
| SCC12G   | 12 module   |

## Mounting Grid Frames



MGF2G



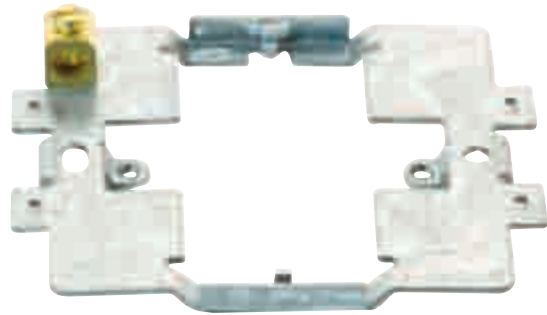
MGF3G



MGF4G



| Code No. | Description |
|----------|-------------|
| MGF1G    | 1 gang      |
| MGF2G    | 2 gang      |
| MGF3G    | 3 gang      |
| MGF4G    | 4 gang      |

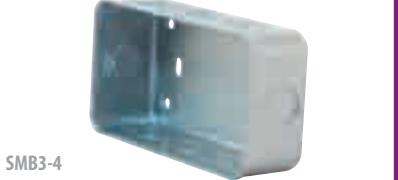


MGF1G  
1 gang

## Steel Boxes - Surface or Flush Mounting



SMB1-2



SMB3-4



SMB6-8



| Code No. | Description |
|----------|-------------|
| SMB1-2   | 1 & 2 gang  |
| SMB3-4   | 3 & 4 gang  |
| SMB6-8   | 6 & 8 gang  |
| SMB12    | 9 & 12 gang |



SMB12  
9 & 12 gang

**Features:**

- Compliant with BS5733
- Suitable for surface and/or flush mounting