



# Surface Metal Clad    Wiring Accessories

- 10 amp Plate Switches
- 20 amp DP Switches
- 45 amp DP Switches
- 13 amp Socket outlets
- Round Pin Socket outlets
- Fused Connection Units
- Surface Mounting Boxes
- TV/FM Sockets
- Communication / Data Sockets
- Blanking Plates



## Introduction



Made from high grade steel with an aluminium epoxy powder coating, the Selectric range of Surface Metal Clad Wiring Accessories is all about durability and performance in the more demanding commercial and industrial environments.

Manufactured to the latest British and European standards,

backed with a 15 year guarantee, easy to install with a clean and modern design you can be assured of the quality of this range!

- Compliant with the latest British and European standards
- CE approved and marked where applicable
- 15 Year guarantee
- Each piece 100% appearance and function tested before being released
- Easy to install with a clean and modern design

### Contents

	Page
10 amp Plate Switches	40
20 amp DP Switches	40
45 amp DP Switches	41
13 amp Socket Outlets	41
Round Pin Socket Outlets	42
Fused Connection Units	42
Surface Mounting Boxes	43
TV/FM Sockets	43
Communication / Data Sockets	44
Blanking Plates	44



## Features & Benefits

- All 10 amp switch modules are interchangeable with any plate product within the range
- All double sockets come with 2 or more earth terminals to comply with the latest IEE wiring regulations
- Stylish and clean to blend into your environment
- High grade steel built for durability and performance in the commercial & industrial environments
- Compliant with the latest British and European standards & CE approved and marked where applicable
- 15 years no quibble manufacturers guarantee



## Technical Information

### Specifications & Features

#### Dimensions

79x79x42mm (1 gang)

79x139x42mm (2 gang)

Supplied with M3.5 fixing screws

#### 10 Amp Plate Switches

- Compliant with BSEN60669-1
- 3 Pole fan isolator compliant with BSEN60947-3-1992
- CE Marked
- X-rated for fluorescent or inductive loads

#### 20 Amp DP Switches

- Compliant with BS3676
- CE Marked
- Cable clamp located on inside of plate capable of accepting 2.5mm flex

#### 45 Amp DP Switches

- Compliant with BS3676
- CE Marked

#### 13 Amp Socket Outlets

- Compliant with BS1363
- 2 earth terminals for safe installation

#### Round Pin Socket Outlets

- Compliant with BS546

#### Fused Connection Units

- Compliant with BS1363
- CE Marked

#### TV/FM Sockets

- Compliant with BS3041 where applicable
- Suitable for use with VHF/UHF TV & VHF signals

#### Communication/Data Sockets

- Compliant with BABT & BSEN41003 where applicable

#### Surface Mounting Boxes

- Compliant with BS5733
- Boxes supplied with adequate amount of knockouts with 20mm diameters (conduits)

#### Blanking Plates

- Compliant with BS5733

## 10 amp Plate Switches



LG201-2MB



LG202MB



LG203MB



Code No.	Description
LG201-2MB	1 gang 2 way - X-Rated
LG202MB	2 gang 2 way - X-Rated
LG203MB	3 gang 2 way - X-Rated
LG204MB	4 gang 2 way - X-Rated
LG205MB	Push switch - X-Rated



**LG204MB**  
4 gang 2 way

**Features:**

- Compliant with BS3676
- CE Marked
- Boxes supplied with adequate amount of knockouts with 20mm diameters (conduits)
- Boxes have 2 fixed lugs
- Each terminal capable of accepting 3x1.5mm conductors
- Earth terminal capable of accepting 3x1.5mm conductors
- X-rated for fluorescent or inductive loads



All 10 amp switch modules are interchangeable with any plate product within the range

## 20 Amp DP Switches



LG220MB



Code No.	Description
LG220MB	DP switch
LG220NMB	DP switch with neon



**LG220NMB**  
DP Switch neon

**Features:**

- Compliant with BS3676
- CE Marked
- Boxes supplied with adequate amount of knockouts with 20mm diameters (conduits)
- Boxes have 2 fixed lugs
- Each terminal capable of accepting 3x2.5mm conductors

45 Amp DP Switches



**LG951NMB**  
1 gang plate with neon

**Features:**

- Compliant with BS3676
- CE Marked
- Boxes supplied with adequate amount of knockouts with 20mm diameters (conduits)
- Boxes have 2 fixed lugs



LG951MB



LG952MB



LG952NMB

Code No.	Description
LG951MB	1 gang plate
LG951NMB	1 gang plate with neon
LG952MB	2 gang plate
LG952NMB	2 gang plate with neon

13 Amp Socket Outlets



**LG9096MB**  
2 gang switched DP with 2 earth  
Terminals

**Features:**

- Compliant with BS1363
- Boxes supplied with adequate amount of knockouts with 20mm diameters (conduits)
- Boxes have 2 fixed lugs
- Terminals capable of accepting 4x2.5mm & 4x2.5mm earth terminal



LG9143MB



LG9099NMB



LG9098NMB

Code No.	Description
LG9143MB	1 gang unswitched
LG9142MB	2 gang unswitched
LG9099MB	1 gang switched SP
LG9098MB	2 gang switched SP with 2 earth terminals
LG9097MB	1 gang switched DP
LG9096MB	2 gang switched DP with 2 earth terminals
LG9099NMB	1 gang switched with neon SP
LG9098NMB	2 gang switched with neon SP



Code No.	Description
LG9092MB	5 amp 3 pin

## Round Pin Socket Outlets



### LG9092MB

5 amp 3 pin

#### Features:

- Compliant with BS546

## Fused Connection Units



LG9228MB



LG9228NMB



LG9218NMB

Code No.	Description
LG9228MB	13 amp unswitched
LG9228/FMB	13 amp unswitched with optional front flex outlet
LG9228NMB	13 amp unswitched with neon
LG9218MB	13 amp DP switched
LG9218/FMB	13 amp DP switched with optional front flex outlet
LG9218NMB	13 amp DP switched with neon
LG9218/FNMB	13 amp DP switched with neon with optional flex outlet on front plate



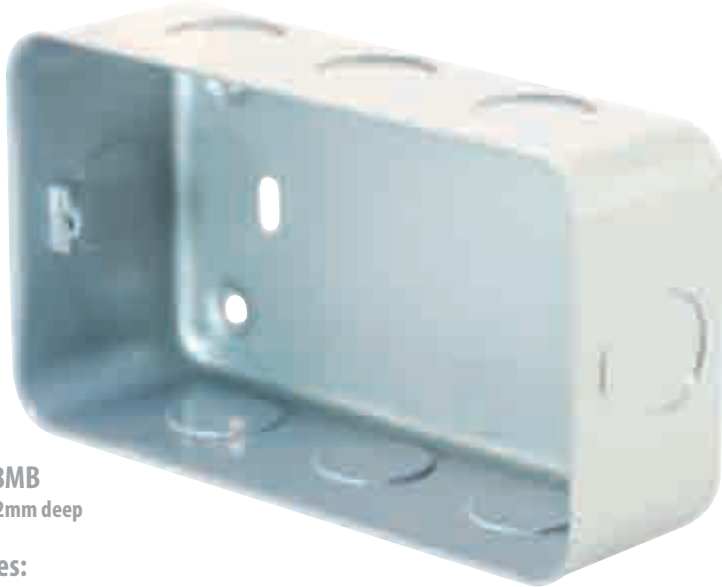
### LG9218/FNMB

13 amp DP switch with optional front flex outlet on front plate

#### Features:

- Compliant with BS1363
- CE Marked
- Boxes supplied with adequate amount of knockouts with 20mm diameters (conduits)
- Terminals capable of accepting 3x2.5mm, 4x2.5mm (Earth)
- Boxes have 2 fixed lugs
- Cable clamp accepts 2.5mm cable

**Surface Mounting Boxes**



**LG8288MB**  
2 gang 42mm deep

**Features:**

- Boxes supplied with adequate amount of knockouts with 20mm diameters (conduits)
- Boxes have 2 fixed lugs
- Fitted with earth terminal

**TV / FM Sockets**



**LG2162MB**  
1 gang TV socket

**Features:**

- Compliant with BSEN41003 where applicable
- Suitable for use with VHF/UHF TV & VHF signals
- Boxes supplied with adequate amount of knockouts with 20mm diameters (conduits)
- Boxes have 2 fixed lugs

LG828MB

Code No.	Description
LG828MB	1 gang 42mm deep
LG8288MB	2 gang 42mm deep

LG2163MB

Code No.	Description
LG2162MB	1 gang TV socket
LG2163MB	2 gang TV socket

Surface Metal Clad Wiring Accessories

## Communication / Data Sockets



LG1515MB



Code No.	Description
LG1514MB	1 gang master telephone socket
LG1515MB	1 gang secondary telephone socket



**LG1514MB**  
1 gang master telephone socket

- Features:**
- Compliant with BABT & BSEN41003 where applicable

## Blanking Plates



LG9111MB



Code No.	Description
LG9111MB	1 gang with back box
LG9112MB	2 gang with back box



**LG9112MB**  
2 gang with back box

- Features:**
- Compliant with BS5733